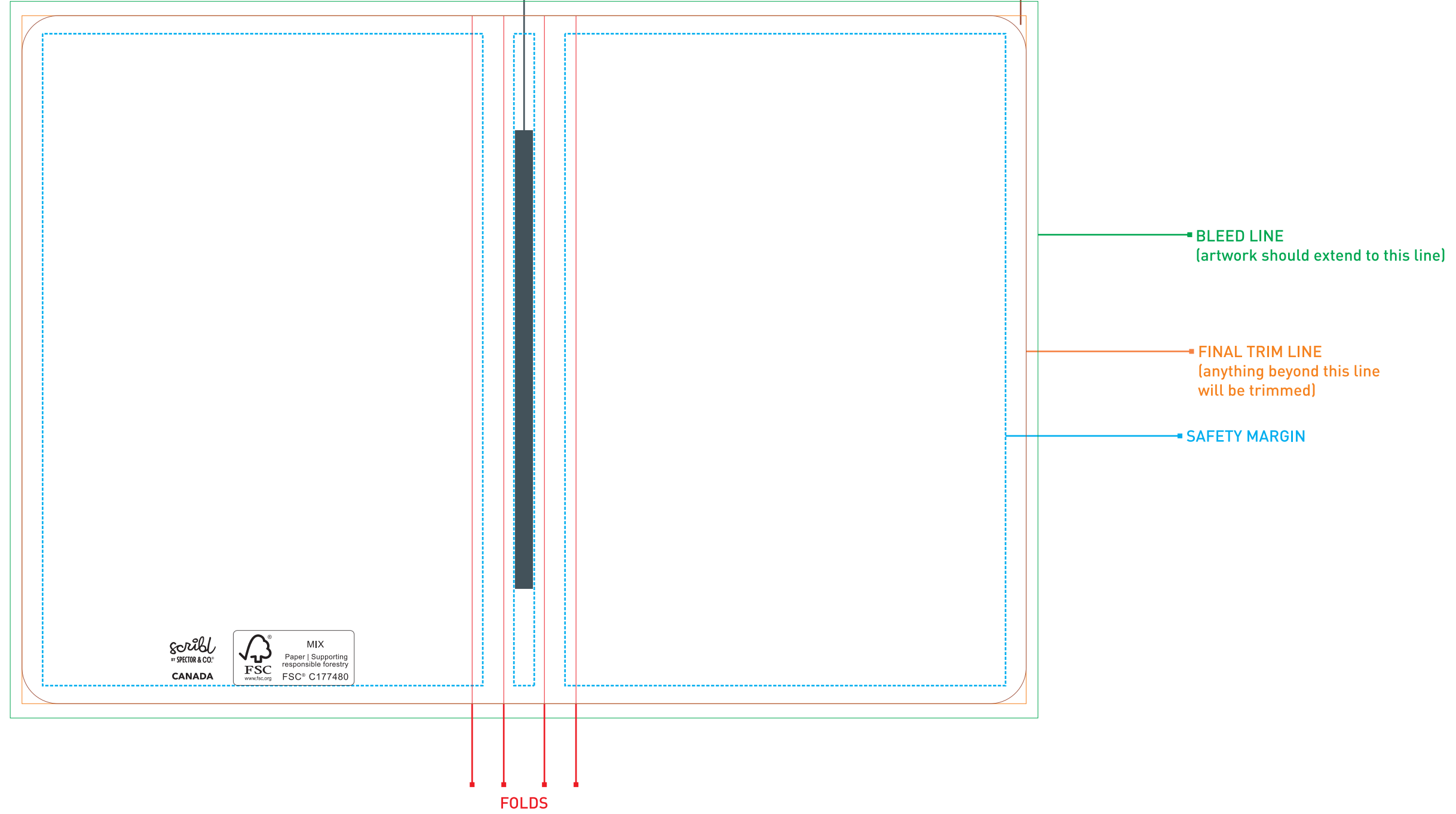
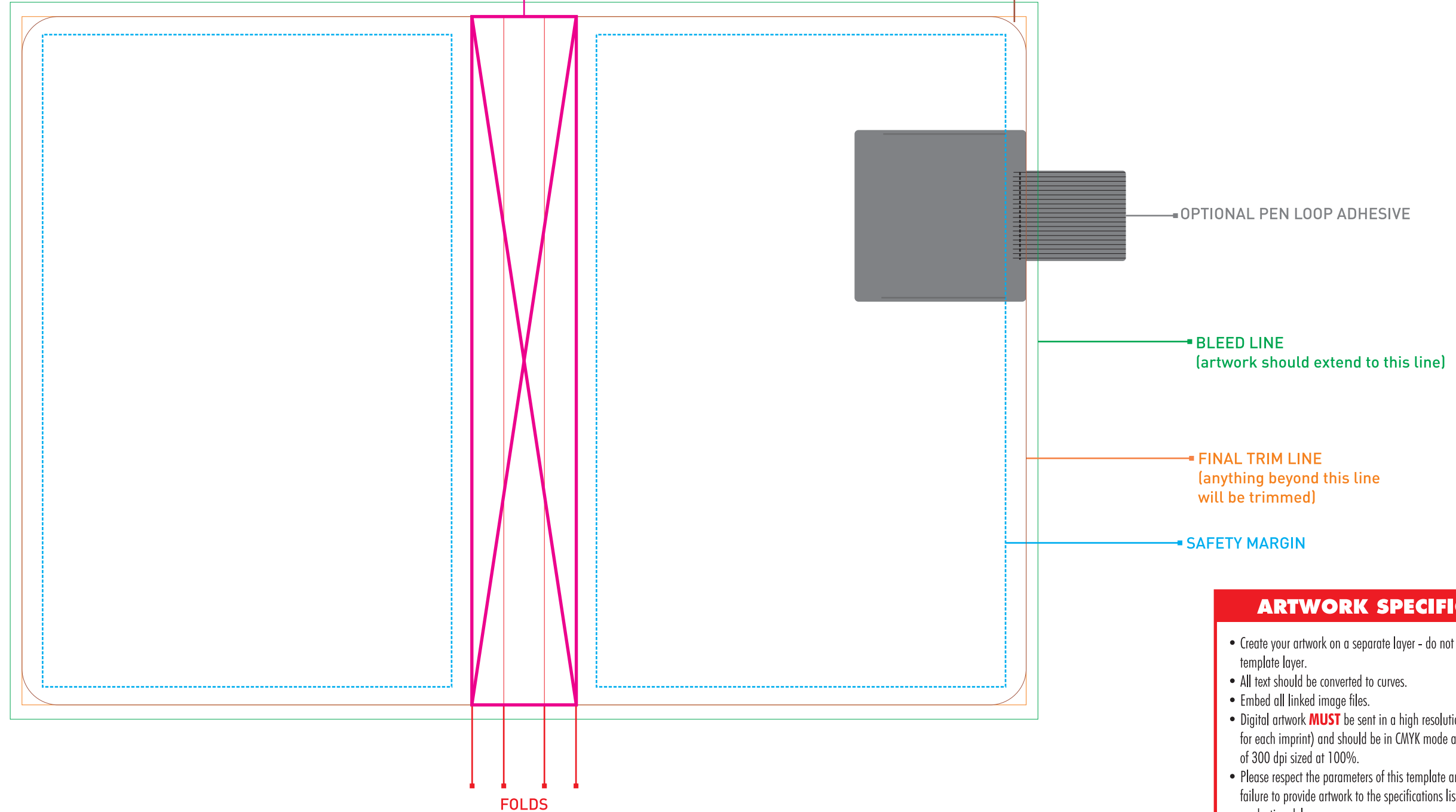


**MINI PERFECT BOUND JOURNAL - 4 x 6"**  
**150 PAGES**  
**OUTSIDE COVER**



**MINI PERFECT BOUND JOURNAL - 4 x 6"**  
**150 PAGES**  
**INSIDE COVER**



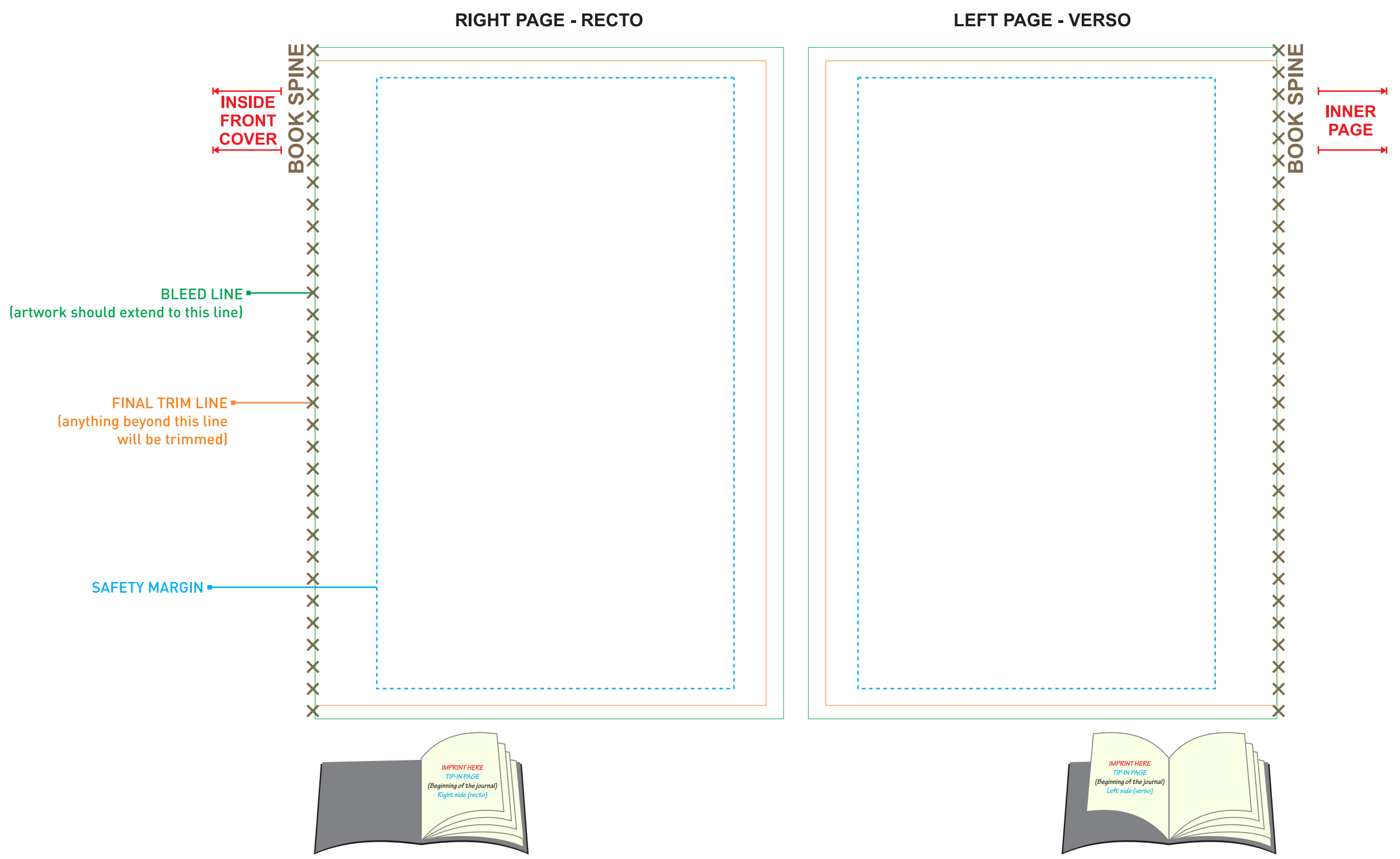
**ARTWORK SPECIFICATIONS**

- Create your artwork on a separate layer - do not merge artwork with the template layer.
- All text should be converted to curves.
- Embed all linked image files.
- Digital artwork **MUST** be sent in a high resolution PDF file (a separate file for each imprint) and should be in CMYK mode at a minimum resolution of 300 dpi sized at 100%.
- Please respect the parameters of this template and be advised that failure to provide artwork to the specifications listed above may result in production delays.
- You can change the color of the **SCRIBL** logo on the back to black or white depending on the background of your artwork. It cannot be resized.
- You can decide to remove the **SCRIBL** logo on the back but the word **"CANADA"** must **ALWAYS** be there to show the country of origin.
- Please remove the **FSC Certification** logo if you do not want it printed. However, please note that you will not be able to call this journal an **FSC certified** item if the stamp is removed.
- If you keep the **FSC Certification** logo, under no circumstances can it be modified, the white background cannot be removed.

**PLEASE REMOVE THIS STAMP AND ALL SPECIFICATION INFORMATION BEFORE SUBMITTING YOUR ARTWORK.**

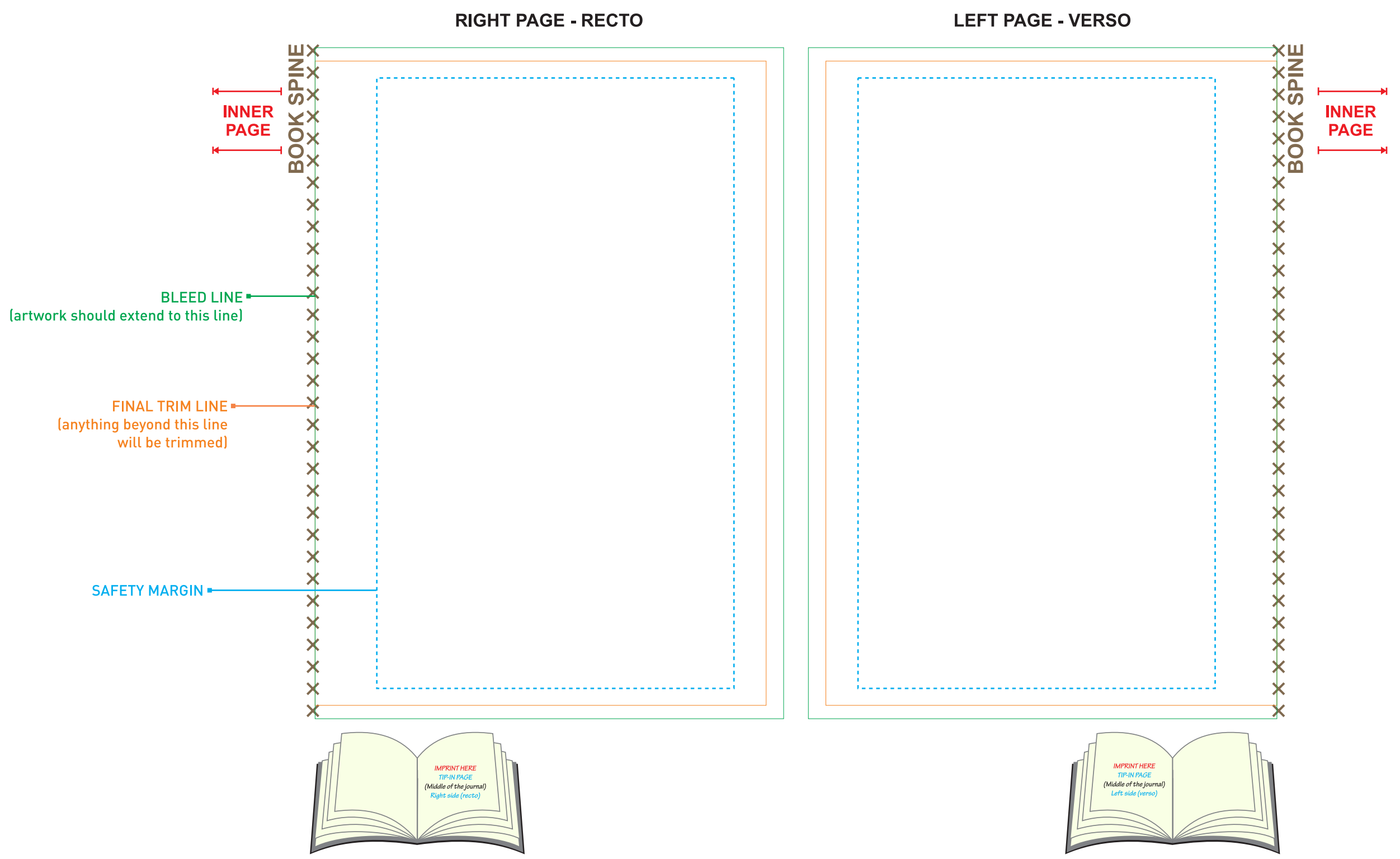
**MINI PERFECT BOUND JOURNAL TIP-IN PAGE - 4 x 6"**

**TIP-IN PAGE AT THE BEGINNING OF THE JOURNAL**



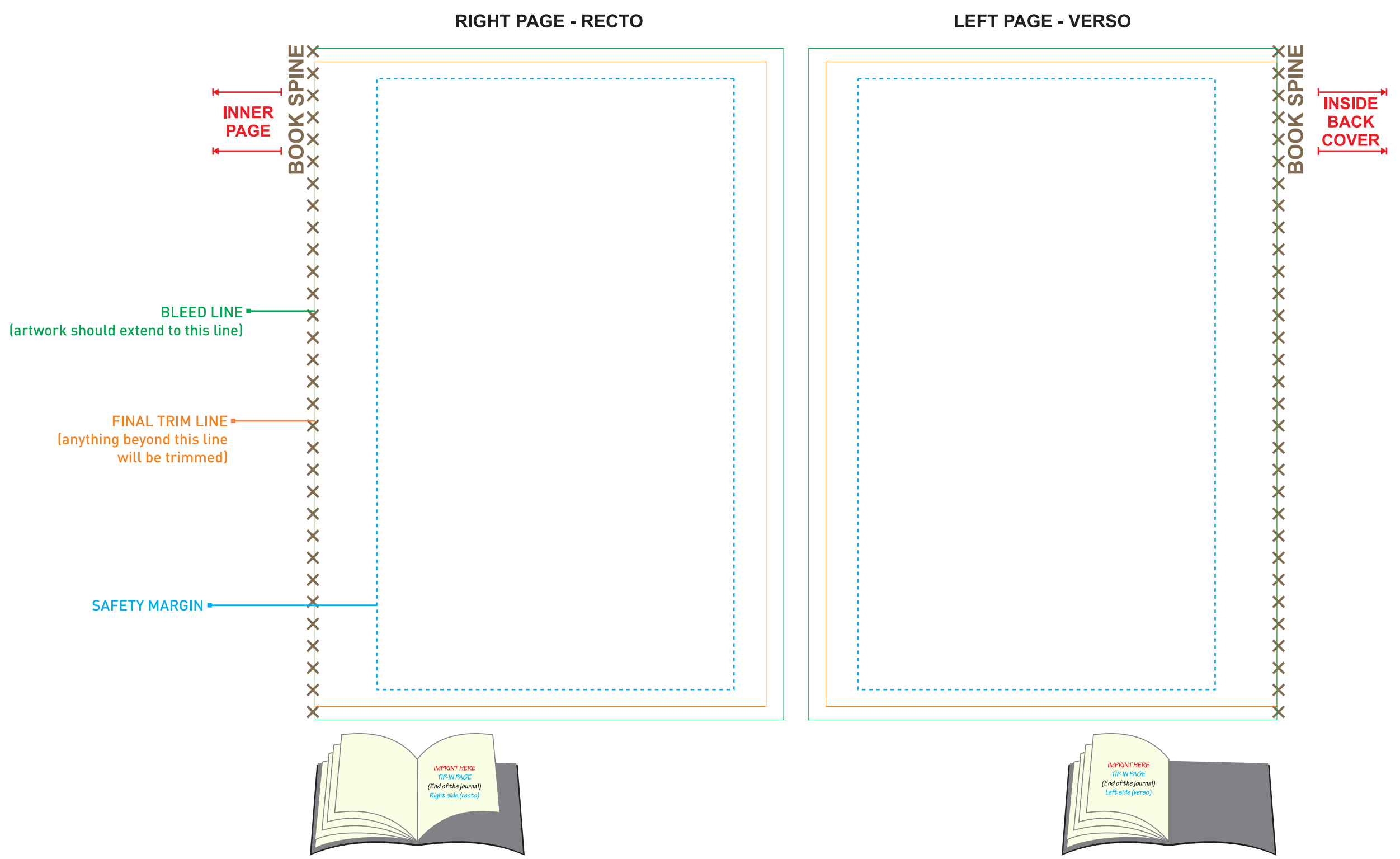
**MINI PERFECT BOUND JOURNAL TIP-IN PAGE - 4 x 6"**

**TIP-IN PAGE AT THE MIDDLE OF THE JOURNAL**



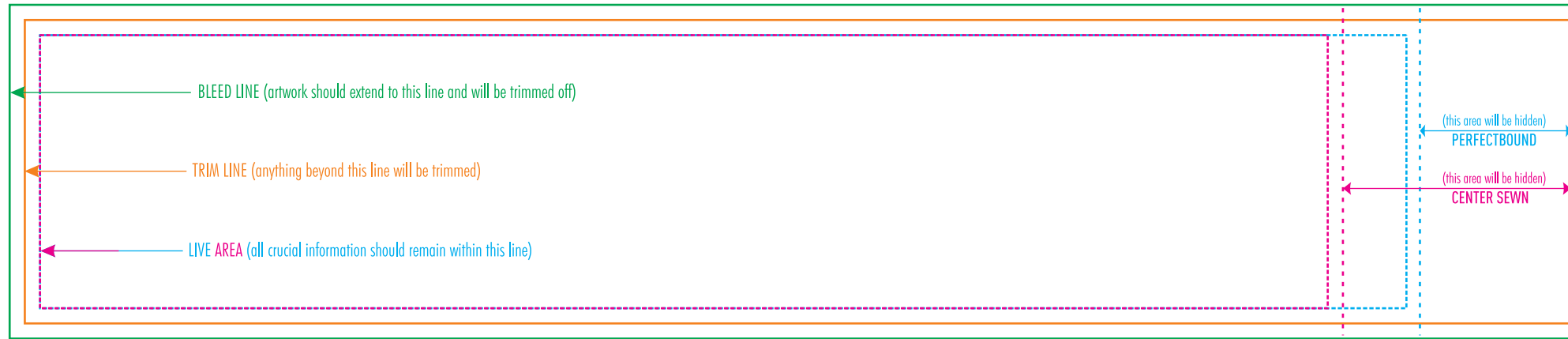
**MINI PERFECT BOUND JOURNAL TIP-IN PAGE - 4 x 6"**

**TIP-IN PAGE AT THE END OF THE JOURNAL**



**SCRIBL JOURNAL - 4 x 6" MINI - SINGLE JOURNAL**

**BLEED: 10.4 x 2.2 || TRIM: 10.2 x 2**



**SCRIBL JOURNAL - 4 x 6" MINI - 3 PACK**

**BLEED: 12.2 x 2.2 || TRIM: 12 x 2**

